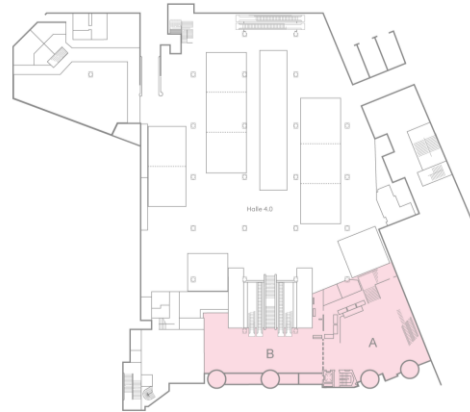
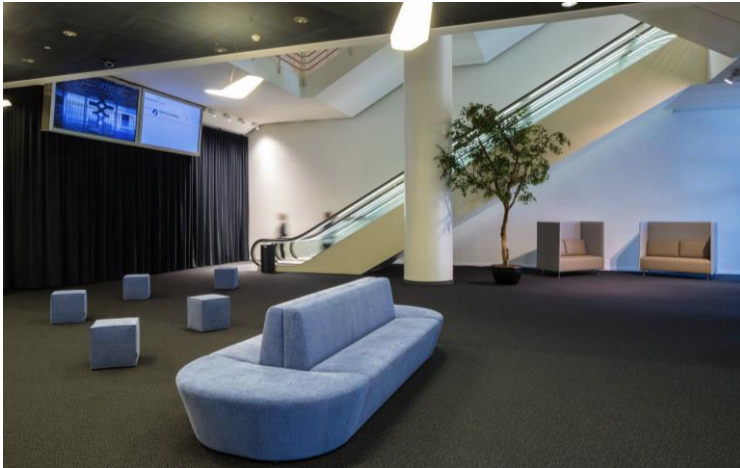
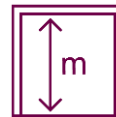


## Congress Center Basel entrance



**Area**



**Height**

### Entrance A

250 m<sup>2</sup>

4.5 m

### Entrance B

200 m<sup>2</sup>

4.5 m

### Features

- Direct access to the 2nd floor foyer and to the halls, via escalators or on the same ground-floor level
- Two separate or combinable entrance zones, each with two revolving doors
- Permanently installed registration and cloakroom facilities
- Permanently installed digital signage
- Daylight
- Fully air-conditioned
- Carpet / tile

[More information online >](#)