

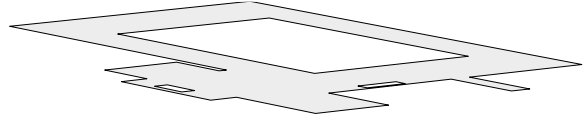
Hall 3

The ground-level Hall 3 with its gallery is ideal for self-contained and independent use. It has a generously-dimensioned entrance area. The hall floor will take an unlimited load and, in its central area (without the gallery), the hall has a height of

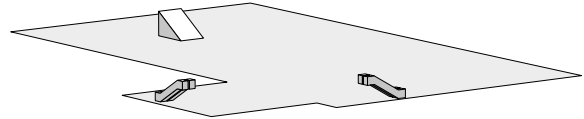
18 metres. This useful height extends over a surface area of more than 2 000 m² (32 m x 65 m) and is additionally column-free. Hall 3 is linked to neighbouring Hall 1 via a walkway.

Hall 3: Facts and figures

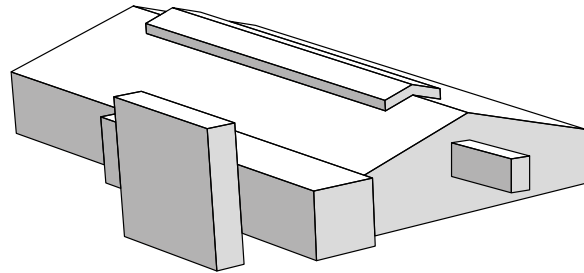
Galerie



Hall 3.0



Hall 3



Key figures	
Year built	1934
Architect	Preiswerk & Esser AG
Floor plan	50 × 100 m
Storeys	1 plus gallery
Overall area	7 000 m ²
Gross exhibition area	
Hall 3.0 Gallery	4 800 m ² 2 300 m ²
Useful hall height	
Hall 3.0 Gallery	5 – 18 m 4 - 5.5 m
Floor covering	Asphalt / concrete (gallery)
Maximum floor load	
Hall 3.0	2 000 kg/m ²
Galleries	400 kg/m ²
Pillar grid	
Hall 3.0	Pillar-free
Lower gallery	7.5 × 14.3 m
On the gallery	Pillar-free
Media points	
Hall 3.0	1 per 36 m ²
Beneath the gallery	1 per 110 m ²
Restaurants	1
Communications technology	Glass fibre network, internet, telephony, PW-LAN
Toilets	
Ladies' toilets	10
Men's toilets	9
Urinals	13
Disabled toilets	2
Lifts	1 goods and 1 person lifts
Dimensions	4.5 × 2.4 × 2.50
Permitted load	4 000 – 8 500 kg
Gate size	5.0 m wide, 4.9 m high