

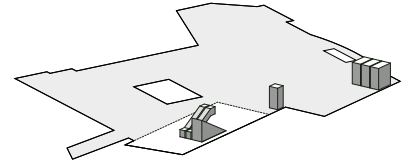
Hall 4

The three-storey Hall 4 has a direct link to the Congress Center Basel located above it, offering a total of 25 congress and conference rooms. It thus has the ideal infrastructure configuration for trade fairs/ accompanying exhibitions and congresses. Located on the ground floor of Hall 4 there are eleven modular rooms, directly accessible from the main entrance to the Congress

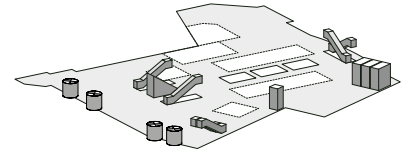
Center Basel. Not only can Hall 4 be used independently, as a self-contained venue, it is also especially suited to fairs where specialist events are held in parallel, as well as for conferences with accompanying exhibitions. The five-star hotel, Swissôtel Le Plaza Basel, is also located in the same building. A walkway links Hall 4 to Hall 1 and the Event Hall on the ground floor.

Hall 4: Facts and figures

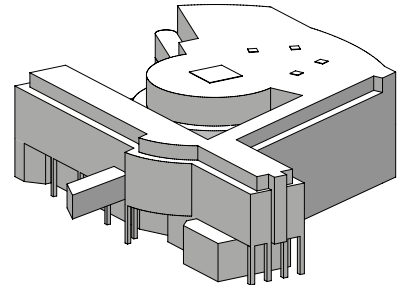
Hall 4.1



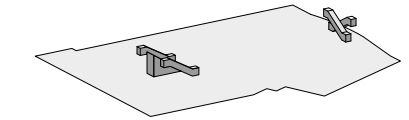
Hall 4.0



Hall 4



Hall 4.U



Key figures	
Built	1984
Architect	Architektengemeinschaft MUBA: Beck + Baur, Berger Architekten, Burckhardt + Partner AG, W. + K. Steib, Suter + Suter AG, W. Wurster, Zwimpfer.Meyer Architekten
Floor plan	
First floor (4.1)	85 × 60 m
Ground floor (4.0)	60 × 60 m
Basement (4.U)	75 × 60 m
Storeys	3
Overall area	14 000 m ²
Gross exhibition area	
Hall 4.1	4 000 m ²
Hall 4.0	3 000 m ²
Hall 4.U	4 100 m ²
Usable hall height	
Hall 4.1	3.5 m
Hall 4.0	4.5 m (entrance area 4.0 m)
Hall 4.U	5.0 m
Floor covering	Artificial stone/hard concrete
Maximum floor load	
Hall 4.1	600 kg/m ²
Hall 4.0	500 kg/m ²
Hall 4.U	1 500 kg/m ²
Pillar grid	11.4 × 11.4 m
Media points	1 media point per 15 m
Restaurants	Mobile outlets
Escalator capacity	26 800 people per hour
Communications technology	Glass fibre network, internet, telephony, PW-LAN
Toilets	
Ladies' toilets	21
Men's toilets	15
Urinals	12
Disabled toilets	1
Lifts	5 goods and person lifts
Dimensions	6.5 × 2.45 × 3.2 m
Permitted load	6 000 kg
Gate size	3.5 m wide, 4.1 m high